

# Table of Contents

Initial, Medial, Final Consonants . . . . .	3	Suffixes <b>-ion, -sion, -ation, -ition,</b>	
Consonants with Varying Sounds—		<b>-ment, and -ness</b> . . . . .	41
<b>c, g, s, and t</b> . . . . .	4	Suffixes <b>-ful and -less</b> . . . . .	42
Consonant Blends . . . . .	5	Suffixes <b>-er, -or, and -ist</b> . . . . .	43
Consonant Digraphs . . . . .	6	Suffixes <b>-able, -ible, and -al</b> . . . . .	44
Consonant Blends and		Suffixes <b>-y and -ly</b> . . . . .	45
Consonant Digraphs . . . . .	7	Suffixes <b>-ish and -ous</b> . . . . .	46
Sounds of <b>ch</b> and <b>th</b> . . . . .	8	Review Prefixes and Suffixes . . . . .	47
Spellings for /sh/ . . . . .	9	Review Prefixes and Suffixes . . . . .	48
Short Vowel Sounds . . . . .	10	Base Words . . . . .	49
Spellings for Long <b>a</b> /ā/ . . . . .	11	Base Words . . . . .	50
Spellings for Long <b>e</b> /ē/ . . . . .	12	Review Word Parts . . . . .	51
Spellings for Long <b>i</b> /ī/ . . . . .	13	Review Word Parts . . . . .	52
Spellings for Long <b>o</b> /ō/ . . . . .	14	Syllables . . . . .	53
Spellings for /ū/, /ōō/, and /ù/ . . . . .	15	Syllabication . . . . .	54
Vowels Followed by <b>r</b> . . . . .	16	Syllabication . . . . .	55
Sounds of <b>ild, ind, igh, old, olt, and ost</b> . . . . .	17	Review Syllabication . . . . .	56
Letter <b>y</b> as Consonant and Vowel . . . . .	18	Dictionary—Alphabetical Order . . . . .	57
Sounds of <b>ea</b> —/ē/, /ā/, and /e/ . . . . .	19	Dictionary—Alphabetical Order . . . . .	58
Spellings for /ou/, /ō/, and /oi/ . . . . .	20	Dictionary—Guide Words . . . . .	59
Spellings for /ô/ . . . . .	21	Dictionary—Entry Words . . . . .	60
Sounds of <b>ou</b> . . . . .	22	Dictionary—Entry Words . . . . .	61
Sounds of <b>qu, gu, gh, and ph</b> . . . . .	23	Dictionary—Pronunciation Key . . . . .	62
Sounds of <b>-ed</b> . . . . .	24	Dictionary—Schwa . . . . .	63
Similar Words . . . . .	25	Dictionary—Primary Accent . . . . .	64
Similar Words . . . . .	26	Dictionary—Primary and	
Review Consonant Sounds . . . . .	27	Secondary Accents . . . . .	65
Review Vowel Sounds . . . . .	28	Dictionary—Accent Shift . . . . .	66
Contractions . . . . .	29	Dictionary—Accent Shift . . . . .	67
Compound Words . . . . .	30	Dictionary—Respellings . . . . .	68
Plurals . . . . .	31	Dictionary—Respellings . . . . .	69
Singular and Plural Possessive Forms . . . . .	32	Dictionary—Multiple Meanings . . . . .	70
Adding a Suffix . . . . .	33	Dictionary—Homographs . . . . .	71
Adding a Suffix . . . . .	34	Dictionary—Homophones . . . . .	72
Changing <b>y</b> to <b>i</b> Before Adding a Suffix . . . . .	35	Synonyms . . . . .	73
Dropping Silent <b>e</b> Before		Antonyms . . . . .	74
Adding a Suffix . . . . .	36	Review Dictionary . . . . .	75
Review Suffixes . . . . .	37	Review Dictionary . . . . .	76
Prefixes <b>in-, im-, non-, dis-, and un-</b> . . . . .	38	Assessment . . . . .	77
Prefixes <b>fore-, pre-, sub-, and inter-</b> . . . . .	39	Assessment . . . . .	78
Prefixes <b>mis-</b> and <b>re-</b> . . . . .	40	Assessment . . . . .	79
		Assessment . . . . .	80

Each of these suffixes means "a person who": **-er** and **-or**.

painter

visitor

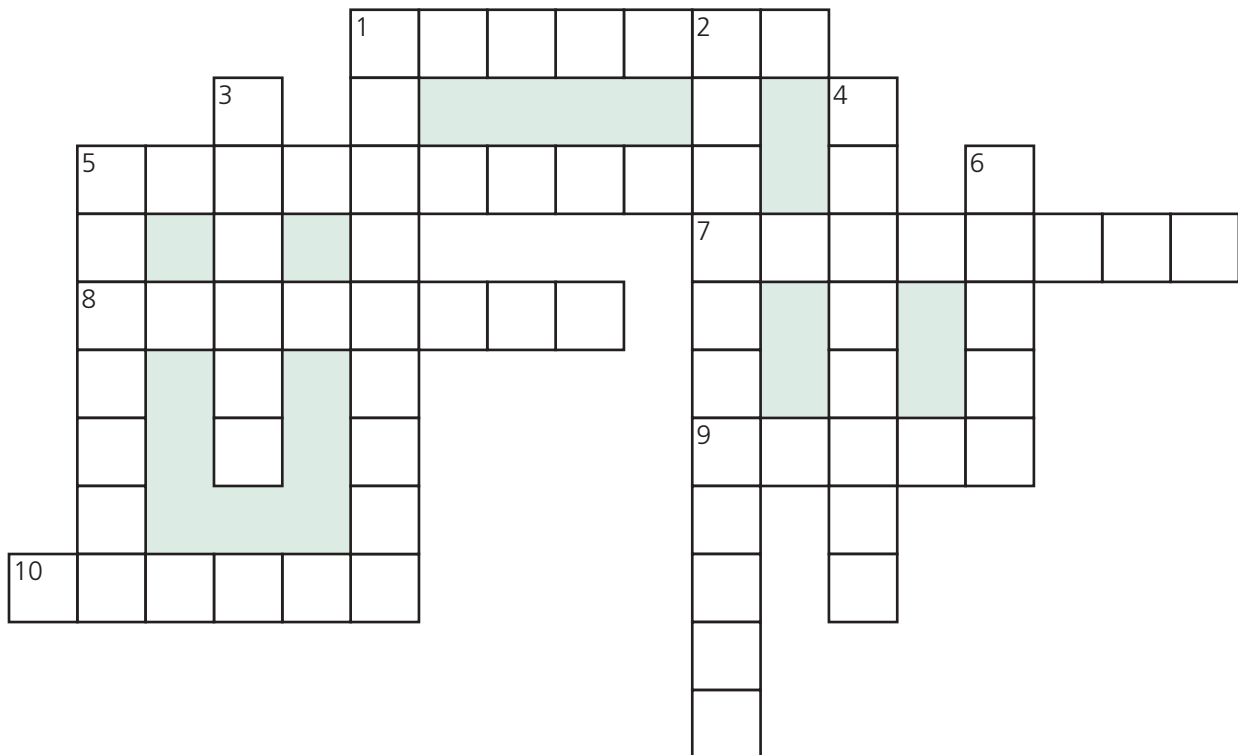
The suffix **-ist** also means "a person who." It tells that the person has something to do with the base word.

violinist

Make a new word by adding **-er**, **-or**, or **-ist** to each word below. Write the new word on the line. You may need to change the spelling of a base word before adding a suffix.

- |                  |                |                     |
|------------------|----------------|---------------------|
| 1. explore _____ | 5. box _____   | 9. special _____    |
| 2. art _____     | 6. speak _____ | 10. swim _____      |
| 3. report _____  | 7. weave _____ | 11. invent _____    |
| 4. science _____ | 8. act _____   | 12. entertain _____ |

Complete the crossword puzzle by using the new words above.



ACROSS

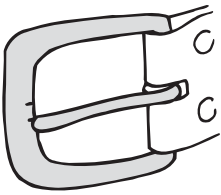
1. A \_\_\_\_\_ talks to someone else.
5. A \_\_\_\_\_ does particular tasks.
7. An \_\_\_\_\_ travels to unknown places.
8. An \_\_\_\_\_ creates new things.
9. An \_\_\_\_\_ plays a part in the movies.
10. An \_\_\_\_\_ works with paintings.

DOWN

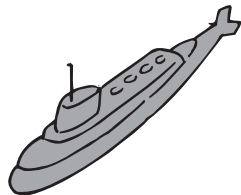
1. A \_\_\_\_\_ may study nature.
2. An \_\_\_\_\_ performs for others in public.
3. A \_\_\_\_\_ makes rugs, baskets, etc.
4. A \_\_\_\_\_ gathers news.
5. A \_\_\_\_\_ moves through the water.
6. A \_\_\_\_\_ fights with fists for sport.

Each syllable in a word contains one vowel sound. To find out the number of syllables in a word, count the number of vowel sounds you hear.

Below each picture, write the number of syllables you hear in the picture name.



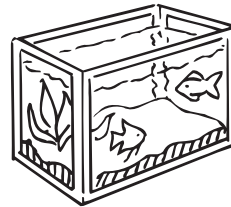
\_\_\_\_\_



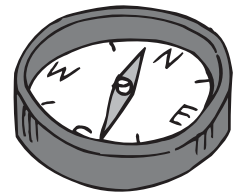
\_\_\_\_\_



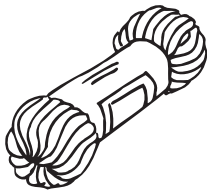
\_\_\_\_\_



\_\_\_\_\_



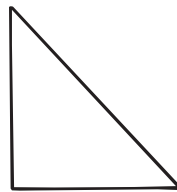
\_\_\_\_\_



\_\_\_\_\_



\_\_\_\_\_



\_\_\_\_\_



\_\_\_\_\_



\_\_\_\_\_

On each line write the number of syllables you hear in the word.

- |                  |                   |                    |                        |
|------------------|-------------------|--------------------|------------------------|
| ___ 1. roam      | ___ 11. discovery | ___ 21. vinegar    | ___ 31. kennel         |
| ___ 2. librarian | ___ 12. necessary | ___ 22. rhyme      | ___ 32. geography      |
| ___ 3. area      | ___ 13. skeleton  | ___ 23. doubt      | ___ 33. improvement    |
| ___ 4. olive     | ___ 14. envelope  | ___ 24. heaven     | ___ 34. pronunciation  |
| ___ 5. uneasily  | ___ 15. wheat     | ___ 25. lonely     | ___ 35. experience     |
| ___ 6. bruise    | ___ 16. festival  | ___ 26. forever    | ___ 36. responsibility |
| ___ 7. hamburger | ___ 17. society   | ___ 27. ache       | ___ 37. unexpected     |
| ___ 8. pause     | ___ 18. forehead  | ___ 28. kneel      | ___ 38. journey        |
| ___ 9. territory | ___ 19. oxygen    | ___ 29. elegant    | ___ 39. conversation   |
| ___ 10. gradual  | ___ 20. poet      | ___ 30. throughout | ___ 40. imagination    |