

## Using a Hundreds Chart: Patterns

---

0	1	2	3	4	5	6	7	8	9
10	11	12	13	14	15	16	17	18	19
20	21	22	23	24	25	26	27	28	29
30	31	32	33	34	35	36	37	38	39
40	41	42	43	44	45	46	47	48	49
50	51	52	53	54	55	56	57	58	59
60	61	62	63	64	65	66	67	68	69
70	71	72	73	74	75	76	77	78	79
80	81	82	83	84	85	86	87	88	89
90	91	92	93	94	95	96	97	98	99

Use this hundreds chart to complete the following items.

1. Shade in all the multiples of 2 with a pencil. Then draw a red X on all the multiples of 3. Which numbers did you shade **and** draw an X on? \_\_\_\_\_

\_\_\_\_\_

2. What can you say about these numbers? \_\_\_\_\_

\_\_\_\_\_

3. Draw a blue circle around all the multiples of 5. Which numbers did you shade, draw an X on, **and** circle? \_\_\_\_\_

\_\_\_\_\_

4. What can you say about these numbers? \_\_\_\_\_

\_\_\_\_\_

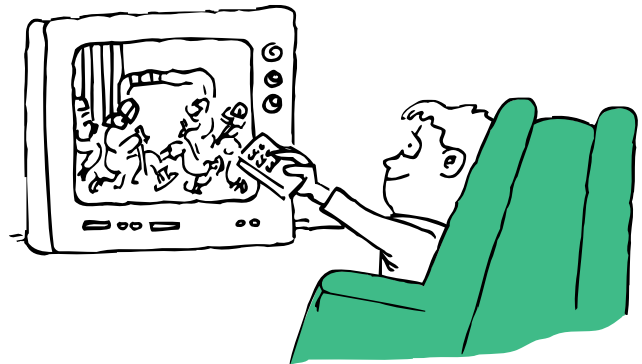


Look at the numbers you did **not** shade or mark. Write something about those numbers.

## Real-Life Number Sense—Interpreting Tables

Read the information in the table. Then answer each question.

TV Show	Time of Show (all P.M.)
Wheel of Fortune	7:00–7:30
Jeopardy	7:30–8:00
Cosby	8:00–8:30
Rugrats	7:30–8:00
Figure Skating	9:00–11:00
Home Improvement	9:00–9:30
Thursday Night Movie	9:00–11:00
NHL Hockey	8:00–11:00



1. How many TV shows are shown on the table? \_\_\_\_\_
2. How many of the shows last only  $\frac{1}{2}$  hour? \_\_\_\_\_
3. How many of the shows last more than 1 hour? \_\_\_\_\_
4. How many of the shows would be on at 10:00 P.M.? \_\_\_\_\_
5. How many of the shows would be on at 9:00 P.M.? \_\_\_\_\_
6. What show could Jane watch at 8:45? \_\_\_\_\_
7. Mr. Lopez watched *Wheel of Fortune*, *Rugrats*, and the whole hockey game. How many hours of TV did he watch?
8. Mrs. Chang watched *Home Improvement* and then *Thursday Night Movie*. How much of the movie did she miss?

### **Challenger**

Build your own schedule for 2 hours of TV on a Saturday. Write the name and the times of each show.